

## Summary

Worksheet Name	ICP-0990-0992.esws	Created Date/Time (local)	06/02/2023 12:42:55
Instrument Name	MY16270003	Created Date/Time (GMT)	06/02/2023 12:42:55
Software Version	7.6.0.12121	Workstation Name	DESKTOP-PKCFD1M
Firmware Version	5590	Report Generated By	DESKTOP-PKCFD1M\AS-CHEM-ICPOES

File Path C:\Users\AS-CHEM-ICPOES\Documents\Agilent\ICP Expert\My Results\ICP-0990-0992.esws

Notes

## Elements

Element	Wavelength (nm)	Label	Type	Internal Standard	Background Correction	Pixels	Calibration Fit	Condition Set
Hf	196.361	Hf (196.361 nm)	Internal Standard		Fitted	2	Linear Weighted	1
Hf	251.689	Hf (251.689 nm)	Internal Standard		Fitted	2	Linear Weighted	1
Hf	263.872	Hf (263.872 nm)	Internal Standard		Fitted	2	Linear Weighted	1
K	766.491	K (766.491 nm)	Analyte		Fitted	2	Linear Weighted	1
Y	324.228	Y (324.228 nm)	Internal Standard		Fitted	2	Linear Weighted	1
Y	360.074	Y (360.074 nm)	Internal Standard		Fitted	2	Linear Weighted	1
Y	361.104	Y (361.104 nm)	Internal Standard		Fitted	2	Linear Weighted	1



UNIVERSITY OF  
**LIVERPOOL**  
Chemistry Analytical Services  
ICP-OES Analysis Report

## Calibrations

### Standard Concentrations By Element

Solution Label	K (ppm)
Blank	0.00
Standard 1	10.00
Standard 2	20.00
Standard 3	50.00
Standard 4	100.00

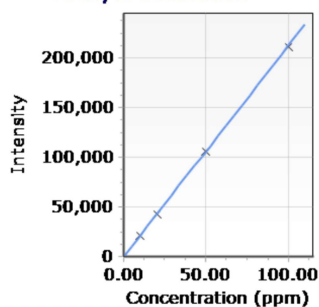
### Calibration Parameters

Label (Wavelength nm)	Calibration Fit	Minimum Concentration	Maximum Concentration	Calibration Error	Excess Curvature	Upward Curvature	%RSE Limit
K (766.491 nm)	Linear Weighted	0.00 ppm	110.00 ppm	5 %			

### Summary Calibration Results

Element and wavelength	Type	Units	Equation	Correlation Coefficient	%RSE
K (766.491 nm)	Analyte	ppm	$2122.16642325 * \text{Concentration} + 194.04414468$	1.00000	1.17414853

**K (766.491 nm)**  
**Analyte Calibration**





UNIVERSITY OF  
**LIVERPOOL**  
Chemistry Analytical Services  
ICP-OES Analysis Report

## Sequence

Rack:Tube	Sample Label	Weight (g)	Volume (mL)	Dilution
S1:1	Blank	1	1	1
S1:2	Standard 1	1	1	1
S1:3	Standard 2	1	1	1
S1:4	Standard 3	1	1	1
S1:5	Standard 4	1	1	1
1:1	ICP-0990	1	1	1
1:2	ICP-0991	1	1	1
1:3	ICP-0992	1	1	1

## Results

Solution Label	Hf (196.361 nm)	Hf (251.689 nm)	Hf (263.872 nm)	K (766.491 nm)	Y (324.228 nm)	Y (360.074 nm)	Y (361.104 nm)
Blank	1.00 (Ratio)	1.00 (Ratio)	1.00 (Ratio)	0.00 (ppm)	1.00 (Ratio)	1.00 (Ratio)	1.00 (Ratio)
Standard 1	0.97 (Ratio)	1.01 (Ratio)	1.00 (Ratio)	10.00 (ppm)	1.00 (Ratio)	1.00 (Ratio)	1.00 (Ratio)
Standard 2	1.01 (Ratio)	1.00 (Ratio)	1.01 (Ratio)	20.00 (ppm)	1.00 (Ratio)	1.00 (Ratio)	1.00 (Ratio)
Standard 3	1.00 (Ratio)	1.03 (Ratio)	1.00 (Ratio)	50.00 (ppm)	1.00 (Ratio)	0.99 (Ratio)	0.99 (Ratio)
Standard 4	0.99 (Ratio)	1.01 (Ratio)	1.00 (Ratio)	100.00 (ppm)	0.99 (Ratio)	0.99 (Ratio)	0.99 (Ratio)
ICP-0990	1.02 (Ratio)	0.97 (Ratio)	0.97 (Ratio)	49.49 (ppm)	0.98 (Ratio)	0.97 (Ratio)	0.98 (Ratio)
ICP-0991	0.93 (Ratio)	0.99 (Ratio)	0.99 (Ratio)	27.95 (ppm)	0.98 (Ratio)	0.97 (Ratio)	0.98 (Ratio)
ICP-0992	1.01 (Ratio)	1.00 (Ratio)	0.99 (Ratio)	25.39 (ppm)	0.98 (Ratio)	0.98 (Ratio)	0.98 (Ratio)